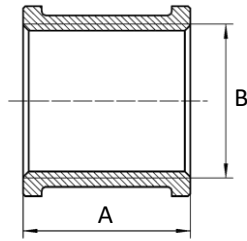
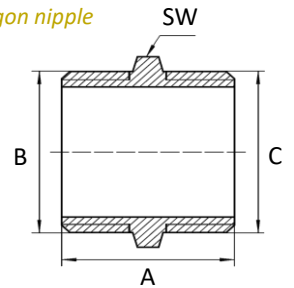


**87270** Manguito H-H  
F-F Socket



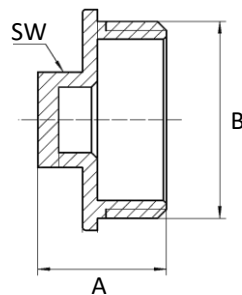
**87280** Machón M-M  
M-M Hexagon nipple



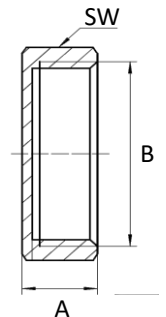
CÓDIGO CODE	MEDIDA SIZE			A	B
87270-010	3/8"	400	10	25	3/8"
87270-015	1/2"	230	10	30	1/2"
87270-020	3/4"	140	10	34	3/4"
87270-025	1"	100	10	36	1"
87270-032	1 1/4"	55	5	43	1 1/4"
87270-040	1 1/2"	35	5	53	1 1/2"
87270-050	2"	45	1	65	2"
87270-065	2 1/2"	30	1	68	2 1/2"
87270-080	3"	21	1	70	3"
87270-100	4"	12	1	80	4"

CÓDIGO CODE	MEDIDA SIZE			A	B	C	SW
87280-008	1/4"	800	10	21	1/4"	1/4"	13
87280-010	3/8"	500	10	22,5	3/8"	3/8"	18
87280-015	1/2"	300	10	25,5	1/2"	1/2"	23
87280-020	3/4"	200	10	29	3/4"	3/4"	28
87280-025	1"	120	5	31,5	1"	1"	35
87280-032	1 1/4"	75	5	35,5	1 1/4"	1 1/4"	44
87280-040	1 1/2"	60	5	39	1 1/2"	1 1/2"	50
87280-050	2"	96	1	45	2"	2"	62
87280-065	2 1/2"	45	1	58	2 1/2"	2 1/2"	76,5
87280-080	3"	32	1	63	3"	3"	89,5
87280-100	4"	12	1	81	4"	4"	115

**87290** Tapón M con reborde  
M Plug beaded



**87300** Tapón hexagonal H  
F Hexagon cap



CÓDIGO CODE	MEDIDA SIZE			A	B	SW
87290-008	1/4"	900	10	13,5	1/4"	10
87290-010	3/8"	600	10	14	3/8"	14
87290-015	1/2"	470	10	17	1/2"	16
87290-020	3/4"	300	10	19,5	3/4"	21
87290-025	1"	200	5	21,5	1"	26
87290-032	1 1/4"	120	5	25,5	1 1/4"	26
87290-040	1 1/2"	110	5	28,5	1 1/2"	32
87290-050	2"	160	1	34,5	2"	37
87290-065	2 1/2"	84	1	39,5	2 1/2"	48
87290-080	3"	56	1	46,5	3"	52
87290-100	4"	24	1	55,5	4"	60

CÓDIGO CODE	MEDIDA SIZE			A	B	SW
87300-010	3/8"	600	10	10,5	3/8"	20
87300-015	1/2"	430	10	12	1/2"	24
87300-020	3/4"	300	10	13,5	3/4"	30
87300-025	1"	200	5	15	1"	36,5
87300-032	1 1/4"	150	5	15	1 1/4"	45,5
87300-040	1 1/2"	110	5	16	1 1/2"	52
87300-050	2"	135	1	19	2"	63,5

MT Business Key, S.L. se reserva el derecho de modificar en parte o en su totalidad las características de sus productos sin previo aviso.  
MT Business Key, S.L. keeps the right to modify in part or totally the characteristics of its products without previous notice.



Para prevenir roturas, accidentes o daños severos, NO USAR este producto fuera de los límites técnicos y sus aplicaciones. Las normas locales pueden regular el uso de este producto.

To avoid abnormal operation, accidents or serious injury, DO NOT use this product outside of the specification range. Local regulations may regulate the use of this product.