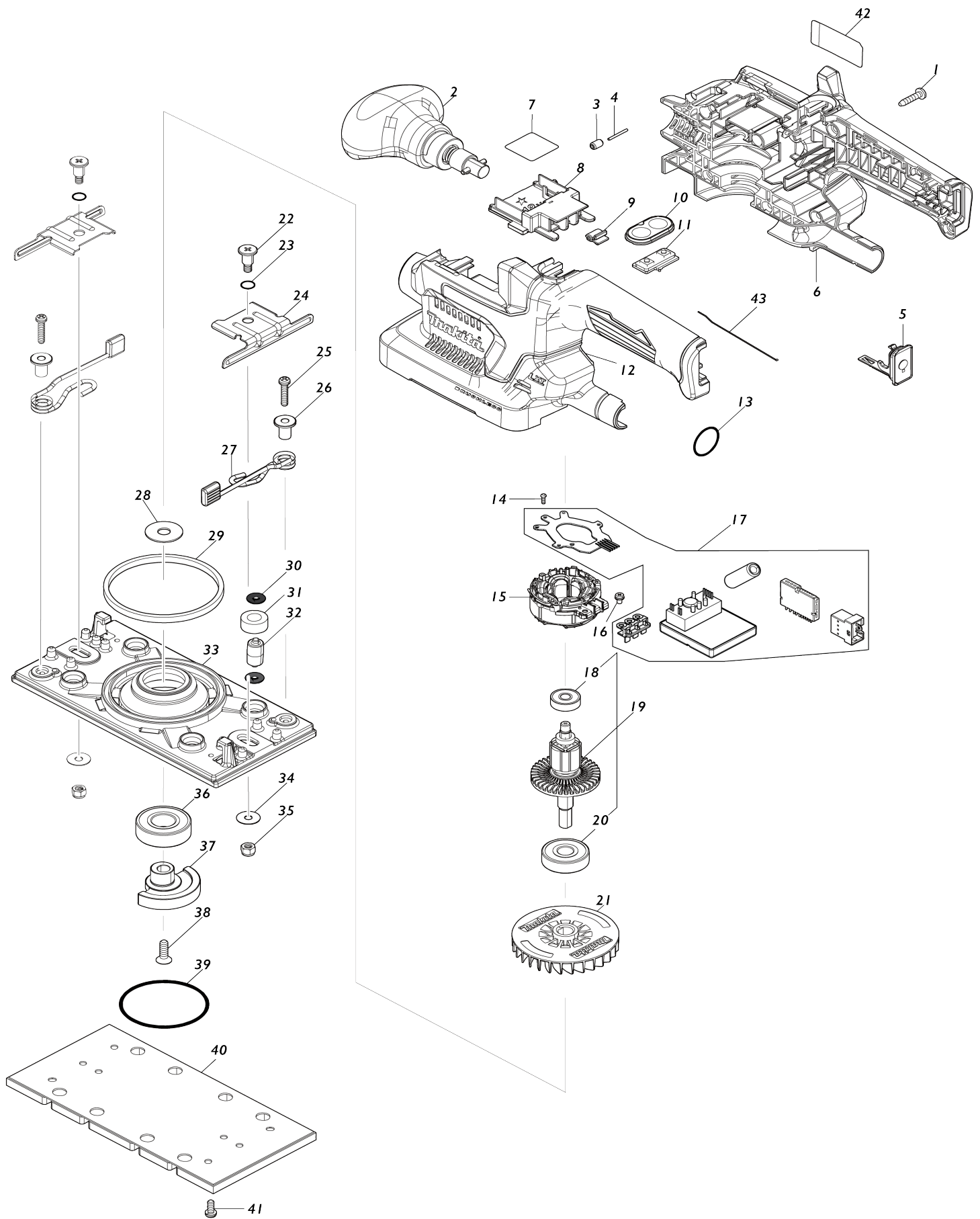


Model No.DBO381 CORDLESS FINISHING SANDER



Model No.DBO381 CORDLESS FINISHING SANDER

Item No.	Parts No.	Description	Interchangability	Q'ty	New/Old	Note1	Note2
001	265995-6	TAPPING SCREW 4X18		9			
002	122A91-8	FRONT GRIP ASSEMBLY		1			
003	263036-2	RUBBER PIN 5		1			
004	268284-8	PIN 1.5		1			
005	140F99-0	CAP COMPLETE		1			
C10	213A05-9	O-RING16		1			
006	183T93-3	HOUSING SET		1			
C10	263005-3	RUBBER PIN 6		2			
D10		INC. 12					
007	8111L2-9	DBO381 SERIAL NO. LABEL		1			
008	643874-2	TERMINAL		1			
009	424517-3	CUSHION		1			
010	141E90-5	SWITCH PLATE COMPLETE		1			
011	632K92-3	SWITCH UNIT		1			
012	183T93-3	HOUSING SET		1			
C10	263005-3	RUBBER PIN 6		2			
D10		INC. 6					
013	213315-8	O RING 19		1			
014	266490-9	TAPPING SCREW PT 2X6		3			
015	629491-2	STATOR		1			
016	652069-6	FLAT HEAD SCREW M3X6		3			
017	620G24-8	CONTROLLER		1			
018	210022-4	BALL BEARING 626DDW		1			
019	519705-6	ROTOR ASSY		1			
D10		INC. 18,20					
020	211087-9	BALL BEARING 6200DDW		1			
021	240230-3	FAN 68		1			
022	266511-7	+ FLAT FILLISTER HEAD SCREW M5		2			
023	213045-1	O-RING 6		2			
024	346102-1	PAPER CLAMP		2			
025	911136-9	PAN HEAD SCREW M4X20		2			
026	310300-3	SPRING GUIDE		2			
027	162279-2	LEVER COMPLETE		2			
028	267353-2	FLAT WASHER 8		1			
029	423469-5	SPONGE 7X105X3		1			
030	213983-7	O RING 4		8			
031	424056-3	SPONGE SLEEVE 9		4			
032	318151-8	FOOT		4			
033	318484-1	BASE		1			
034	253807-5	FLAT WASHER 5		2	*		
034-1	253572-6	FLAT WASHER 5	<	2			
035	252103-8	HEX. LOCK NUT M5-8		2			
036	211228-7	BALL BEARING 6202DDW		1			
037	313395-5	BALANCER		1			
038	912222-9	COUNTERSUNK HEAD SCREW M5 X16		1			
039	213656-2	O RING 53		1			

040	140441-9	PAD COMPLETE		1		
041	911111-5	PAN HEAD SCREW M4X10 WITH W		4		
042	8111K8-0	DBO381 NAME PLATE		1		
043	327983-2	EARTH WIRE		1		
A01	140115-2	DUST BAG COMPLETE		1		
A02	451271-6	PUNCH PLATE		1		
A03	A-31267	ABRASIVE PAPER 93X228 #120		1		
A04	422807-8	BATTERY PROTECTOR		1		
A05	450128-8	BATTERY COVER		1		
A06	***DC18RC	DC18RC FAST CHARGER		1		
D10		COMPO-PARTS				
A07	197280-8	BATTERY BL1850B SET		2		
A08	821551-8	CONNECTOR PLASTIC CASE (TYPE3)		1		
C10	453974-8	LATCH		4		
A09	8351P0-7	INNER TRAY		1		
A10	8043F4-2	DBO381RTJ PLASTIC CASE LABEL		2		
A11	8043F3-4	DBO381RTJ INDICATION LABEL		1		
F05	194947-9	PUNCH PLATE SET		1		
F17	195134-3	FILTER SET		1		
F21-1	198900-7	WIRELESS UNIT SET	<	1		
A10	8043F9-2	DBO381RTJU PLASTIC CASE LABEL		2		
A11	8043F8-4	DBO381RTJU INDICATION LABEL		1		
A12	198900-7	WIRELESS UNIT SET		1	*	
A12-1	198900-7	WIRELESS UNIT SET	<	1		

Please state Parts No. when your order.

Print Date 06/10/2024