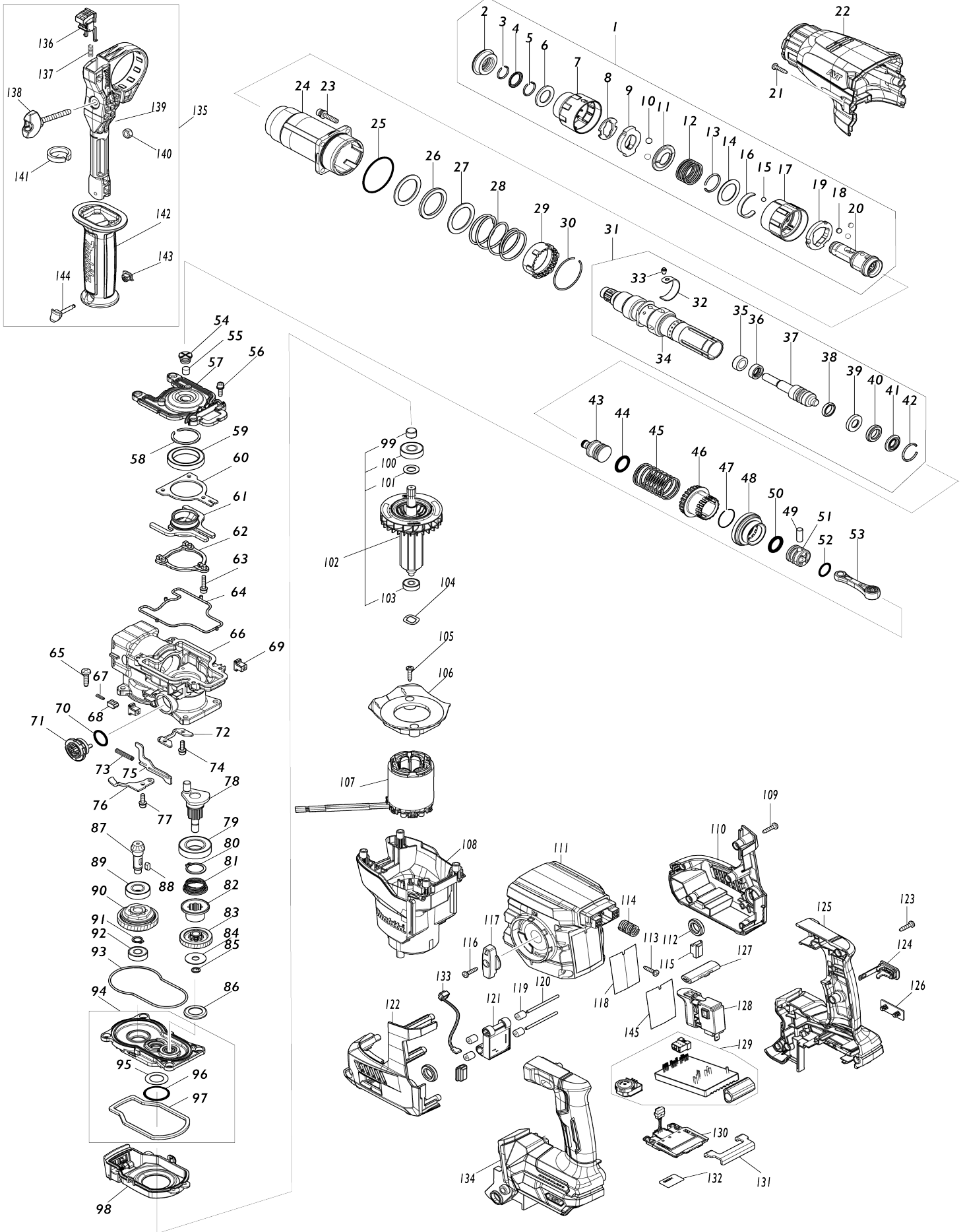


Model No.HR009G 30MM CRDLS COMBINATION HAMMER



Model No.HR009G 30MM CRDLS COMBINATION HAMMER

Item No.	Parts No.	Description	Interchangability	Q'ty	New/Old	Note1	Note2
001	127219-7	TOOL HOLDER ASSEMBLY		1			
001		INC. 2-20					
002	422570-3	CAP 35		1			
003	233989-9	RING SPRING 14		1			
004	346221-3	WASHER 16		1	*		
004-1	346834-0	WASHER 16	O	1			
005	233992-0	RING SPRING 15		1			
006	253467-3	WASHER 17		1			
007	459162-5	CHUCK COVER		1			
008	347687-0	PLATE		1			
009	310926-1	STOPPER		1			
010	216022-2	STEEL BALL 7.0		2			
011	347745-2	GUIDE WASHER		1			
012	232554-1	COMPRESSION SPRING 26		1			
013	233924-7	RING SPRING 21		1			
014	253468-1	FLAT WASHER 24		1			
015	216018-3	STEEL BALL 5.0		1			
016	232555-9	LEAF SPRING		1			
017	459159-4	CHANGE COVER A		1			
018	216013-3	STEEL BALL 6		3			
019	347496-7	CHANGE RING A		1			
020	327264-4	TOOL HOLDER		1			
021	266326-2	TAPPING SCREW 4X18		2			
022	459167-5	BARREL COVER		1			
023	266793-1	HEX. S.H.B. M5X25 WITH WR		4			
024	140J35-0	BARREL COMPLETE		1			
C10	213636-8	OIL SEAL 25		1			
025	213620-3	O RING 46		1			
026	422493-5	RUBBER RING 31		1			
027	267354-0	FLAT WASHER 31		2			
028	232496-9	COMPRESSION SPRING 37		1			
029	419986-1	LOCK SLEEVE		1			
030	233952-2	RING SPRING 41		1			
031	136305-3	TOOL HOLDER ASS'Y		1			
031		INC. 32-42					
032	347501-0	LEAF SPRING		1			
033	256598-7	SHOULDER PIN 4		1			
034	327272-5	TOOL HOLDER GUIDE		1			
035	327515-5	SLEEVE 11		1			
036	327516-3	RING 11		1			
037	140S90-6	IMPACT BOLT B COMPLETE		1			
038	213880-7	SEAL RING 12		1			
039	327268-6	RING 11		1			
040	424267-0	CUSHION RING 12		1			
041	327271-7	WASHER 11		1			
042	231987-7	RING SPRING 21		1			
043	327266-0	STRIKER		1			

044	213881-5	O RING 16		1		
045	232497-7	COMPRESSION SPRING 27		1		
046	327276-7	DRIVING SLEEVE		1		
047	232501-2	RING SPRING 24		1		
048	226868-8	SPIRAL BEVEL GEAR 31		1		
049	268122-4	PIN 7		1		
050	213881-5	O RING 16		1		
051	319807-6	PISTON		1		
052	213226-7	O RING 16		1		
053	140J36-8	CONNECTING ROD COMPLETE		1		
054	459180-3	FILTER CAP		1		
055	443153-6	FELT		1		
056	922123-3	HEX. SOCKET HEAD BOLT M4X14		4		
057	319802-6	CRANK CAP		1		
058	961140-8	RETAINING RING		1		
059	211423-9	BALL BEARING 6806DDW		1		
060	347500-2	BEARING RETAINER B		1		
061	140J31-8	COUNTER WEIGHT COMPLETE		1		
062	310927-9	WEIGHT RETAINER		1		
063	266948-8	HEX S. H. BOLT M4X20 WITH WR		3		
064	459182-9	SEAL RING B		1		
065	266021-4	TAPPING SCREW 5X20		4		
066	140J33-4	CRANK HOUSING COMPLETE		1		
067	232499-3	COMPRESSION SPRING 2		1		
068	310929-5	PUSH CORN		1		
069	455165-7	FIX GUIDE		2		
070	213262-3	O RING 18		1		
071	459175-6	LINK LEVER		1		
072	347497-5	BEARING RETAINER A		1		
073	234019-9	COMPRESSION SPRING 4		1		
074	922123-3	HEX. SOCKET HEAD BOLT M4X14		2		
075	345814-3	LINK PLATE		1		
076	347498-3	GUIDE PLATE		1		
077	922123-3	HEX. SOCKET HEAD BOLT M4X14		1		
078	140M22-7	CRANK SHAFT COMPLETE		1		
079	211323-3	BALL BEARING 6904LLU		1		
080	961060-6	RETAINING RING S-20		1		
081	232498-5	CONICAL COMP. SPRING 21-26		1		
082	327273-3	CLUTCH		1		
083	226869-6	HELICAL GEAR 31		1		
084	267353-2	FLAT WASHER 8		1		
085	961034-7	RETAINING RING		1		
086	345818-5	CUP WASHER 16		1		
087	226867-0	SPIRAL BEVEL GEAR 8		1		
088	254239-9	KEY 4		1		
089	211131-2	BALL BEARING 6001DDW		1		
090	125386-2	TORQUE LIMITER ASS'Y		1		
091	961006-2	RETAINING RING S-10		1		
092	210005-4	BALL BEARING 608DDW		1		
093	459181-1	SEAL RING A		1		
094	136330-4	GEAR HOUSING ASS'Y		1		
094		INC. 95-97				

095	253749-3	FLAT WASHER 16		1		
096	213445-5	O-RING 26		1		
097	459183-7	SPONGE SHEET		1		
098	140J32-6	AIR DUCT COMPLETE		1		
099	331775-3	SLEEVE 10		1		
100	211097-6	BALL BEARING 6000LLB		1		
101	253828-7	FLAT WASHER 10		1		
102	519722-6	ROTOR ASS'Y		1		
102		INC. 99-101,103				
103	210022-4	BALL BEARING 626DDW		1		
104	253555-6	WAVE WASHER 12		1		
105	266326-2	TAPPING SCREW 4X18		2		
106	413F13-2	BAFFLE PLATE		1		
107	629A96-4	STATOR		1		
108	141H81-4	MOTOR HOUSING COMPLETE		1		
C10	263027-3	RUBBER PIN 4		1		
109	266326-2	TAPPING SCREW 4X18		5		
110	183V77-3	HOUSING SET		1		
110		INC. 122				
111	413F12-4	HANDLE BASE		1		
112	459184-5	CUSHION RING 12		2		
113	266326-2	TAPPING SCREW 4X18		4		
114	232500-4	COMPRESSION SPRING 10		1		
115	422863-8	BATTERY CUSHION		2		
116	266326-2	TAPPING SCREW 4X18		1		
117	459174-8	CHANGE LEVER		1		
118	8119X5-5	HR009G NAME PLATE		1		
119	422472-3	SPONGE SLEEVE 3		4		
120	256886-2	ROD 3		2		
121	620J19-9	ACCELEROMETER CIRCUIT		1		
122	183V77-3	HOUSING SET		1		
122		INC. 110				
123	266326-2	TAPPING SCREW 4X18		6		
124	140G30-2	CAP COMPLETE		1		
C10	213A05-9	O-RING16		1		
125	183V96-9	HANDLE SET		1		
C10	263005-3	RUBBER PIN 6		2		
C20	8005T5-8	XGT LOGO LABEL		1		
125		INC. 134				
126	459753-2	CAP		1		
127	453124-5	F/R CHANGE LEVER		1		
128	651439-6	SWITCH C3JR-4B-2		1		
129	620J18-1	CONTROLLER		1		
130	632P65-6	TERMINAL UNIT		1		
131	347885-6	SUPPORT PLATE		1		
132	8119Y1-0	HR009G SERIAL NO. LABEL		1		
133	620G34-5	LED CIRCUIT		1		
134	183V96-9	HANDLE SET		1		
C10	263005-3	RUBBER PIN 6		2		
C20	8005T5-8	XGT LOGO LABEL		1		
134		INC. 125				

135	126882-3	GRIP ASSEMBLY		1		
135		INC. 136-144				
136	144959-2	LOCK BUTTON COMPLETE		1		
137	233360-7	COMPRESSION SPRING 4		1		
138	265625-9	THUMB SCREW M6X50		1		
139	458355-1	SIDE HANDLE BASE		1		
140	931302-2	HEX. NUT M6		1		
141	422258-5	SPONGE SHEET		1		
142	458357-7	GRIP 36		1		
143	422255-1	CAP		1		
144	161838-9	FIX PIN		1		
145	8052T1-3	CLEAR LABEL		1	*	
A01	331886-4	DEPTH GAUGE		1		
A02	198993-4	GREASE VESSEL SET		1		
A03	443122-7	CLOTH		1	*	
A04	191F46-4	DRILL CHUCK SET		1		
A05	821875-2	PLASTIC CASE		1		
C10	162271-8	LATCH		2		
A06	8053B2-1	HR009GZ012 PLASTIC CASE LABEL		2		
A06	8053B3-9	HR009GZ02 PLASTIC CASE LABEL		2		
A07	***DX11	DUST COLLECTION SYSTEM SET		1		
C10	459206-1	SEALING CAP		5		
A07		COMPO-PARTS				
A08	195179-1	DUSTCUP SET		1		
A10	***DC40RA	DC40RA FAST CHARGER		1		
A10		COMPO-PARTS				
A11	412393-7	BATTERY COVER		1		
A12	191B26-6	BATTERY BL4040 SET		2		
B01	1910S0-5	HAMMER SERVICE KIT		1		
C10	181490-7	HAMMER GREASE 30G		2	*	
C11	1914C5-7	GREASE SET	O	2		
B01		INC. 2,3,5,10,33,37,38,40,42,				
B01		INC. 44,47,50				
F05	191F46-4	DRILL CHUCK SET		1		
F06	191F47-2	TOOL HOLDER SET		1		
F07	191F49-8	DUST CASE SET		1		
F08	191G00-4	DX11DUST COLLECTION SYSTEM SET		1		
F10	191W90-3	HOOK SET		1		
F22	199557-7	FILTER SET		1		
G12	1914X3-8	DUST EXTRACTION PAD SET		1		

Please state Parts No. when your order.

Print Date 12/02/2024