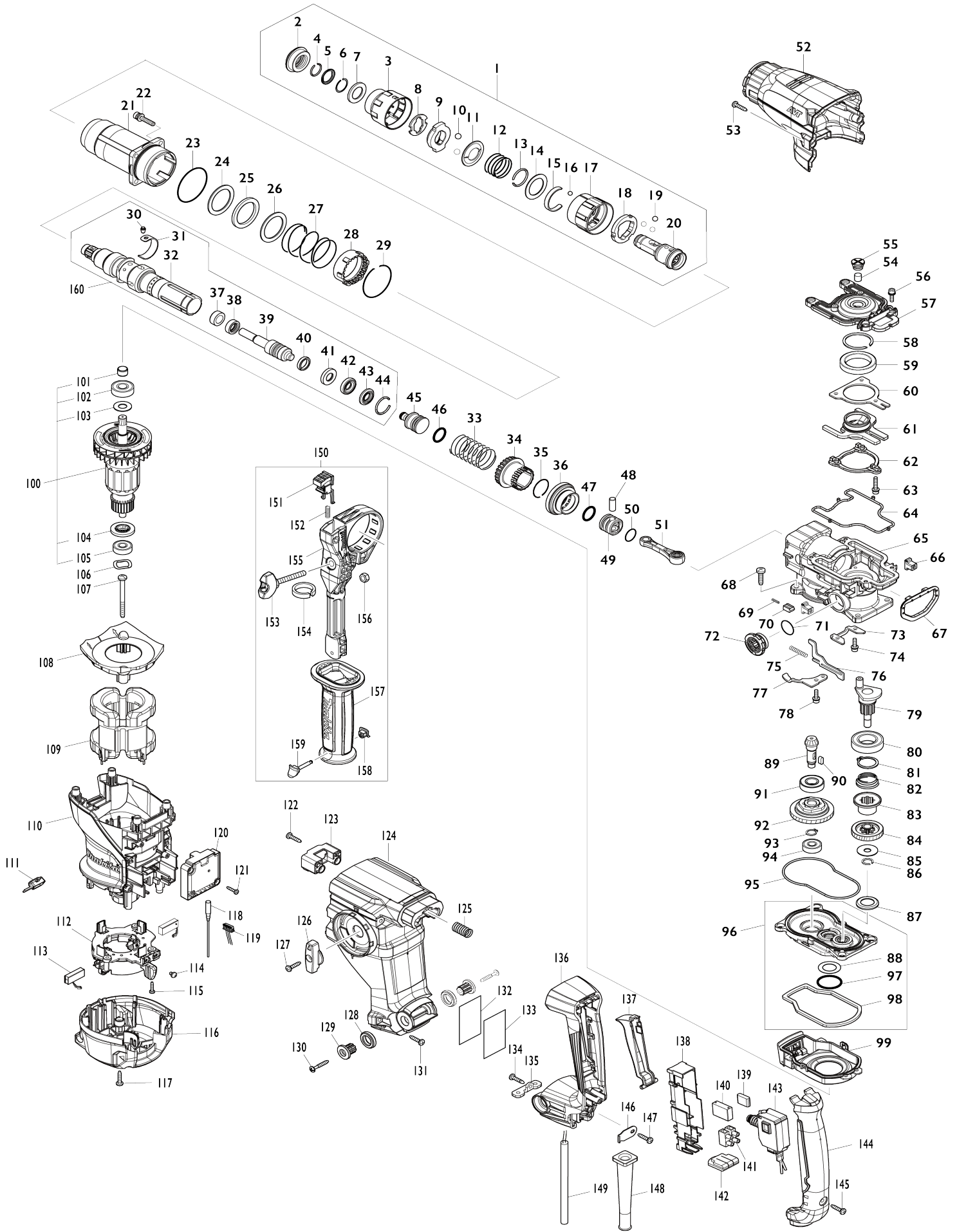


Model No.HR3012FC 30MM COMBINATION HAMMER



Model No.HR3012FC 30MM COMBINATION HAMMER

Item No.	Parts No.	Description	Interc hang eabilit y	Q'ty	New/ Old	Note1	Note2
001	127219-7	TOOL HOLDER ASSEMBLY		1			
D10		INC. 2-20					
002	422570-3	CAP 35		1			
003	459162-5	CHUCK COVER		1			
004	233989-9	RING SPRING 14		1			
005	346221-3	WASHER 16		1	*		
005-1	346834-0	WASHER 16	O	1			
006	233992-0	RING SPRING 15		1			
007	253467-3	WASHER 17		1			
008	347687-0	PLATE		1			
009	310926-1	STOPPER		1			
010	216022-2	STEEL BALL 7.0		2			
011	347745-2	GUIDE WASHER		1			
012	232554-1	COMPRESSION SPRING 26		1			
013	233924-7	RING SPRING 21		1			
014	253468-1	FLAT WASHER 24		1			
015	232555-9	LEAF SPRING		1			
016	216018-3	STEEL BALL 5.0		1			
017	459159-4	CHANGE COVER A		1			
018	347496-7	CHANGE RING A		1			
019	216013-3	STEEL BALL 6		3			
020	327264-4	TOOL HOLDER		1			
021	140J35-0	BARREL COMPLETE		1			
C10	213636-8	OIL SEAL 25		1			
022	266793-1	HEX. S.H.B. M5X25 WITH WR		4			
023	213620-3	O RING 46		1			
024	267354-0	FLAT WASHER 31		1			
025	422493-5	RUBBER RING 31		1			
026	267354-0	FLAT WASHER 31		1			
027	232496-9	COMPRESSION SPRING 37		1			
028	419986-1	LOCK SLEEVE		1			
029	233952-2	RING SPRING 41		1			
030	256598-7	SHOULDER PIN 4		1			
031	347501-0	LEAF SPRING		1			
032	327272-5	TOOL HOLDER GUIDE		1			
033	232497-7	COMPRESSION SPRING 27		1			
034	327276-7	DRIVING SLEEVE		1			
035	232501-2	RING SPRING 24		1			
036	226868-8	SPIRAL BEVEL GEAR 31		1			
037	327515-5	SLEEVE 11		1			
038	327516-3	RING 11		1			
039	140S90-6	IMPACT BOLT B COMPLETE		1			
040	213880-7	SEAL RING 12		1			
041	327268-6	RING 11		1			
042	424267-0	CUSHION RING 12		1			
043	327271-7	WASHER 11		1			
044	231987-7	RING SPRING 21		1			

045	327266-0	STRIKER		1		
046	213881-5	O RING 16		1		
047	213881-5	O RING 16		1		
048	268122-4	PIN 7		1		
049	319807-6	PISTON		1		
050	213226-7	O RING 16		1		
051	140J36-8	CONNECTING ROD COMPLETE		1		
052	459167-5	BARREL COVER		1		
053	266326-2	TAPPING SCREW 4X18		2		
054	443153-6	FELT		1		
055	459180-3	FILTER CAP		1		
056	922123-3	HEX. SOCKET HEAD BOLT M4X14		4		
057	319802-6	CRANK CAP		1		
058	961140-8	RETAINING RING		1		
059	211423-9	BALL BEARING 6806DDW		1		
060	347500-2	BEARING RETAINER B		1		
061	140J31-8	COUNTER WEIGHT COMPLETE		1		
062	310927-9	WEIGHT RETAINER		1		
063	266948-8	HEX S. H. BOLT M4X20 WITH WR		3		
064	459182-9	SEAL RING B		1		
065	140J33-4	CRANK HOUSING COMPLETE		1		
066	455165-7	FIX GUIDE		2		
067	422492-7	CUSHION		1		
068	266420-0	TAPPING SCREW 5X20		4	*	
068-1	266021-4	TAPPING SCREW 5X20	<	4		
069	232499-3	COMPRESSION SPRING 2		1		
070	310929-5	PUSH CORN		1		
071	213262-3	O RING 18		1		
072	459175-6	LINK LEVER		1		
073	347497-5	BEARING RETAINER A		1		
074	922123-3	HEX. SOCKET HEAD BOLT M4X14		2		
075	234019-9	COMPRESSION SPRING 4		1		
076	345814-3	LINK PLATE		1		
077	347498-3	GUIDE PLATE		1		
078	922123-3	HEX. SOCKET HEAD BOLT M4X14		1		
079	140M22-7	CRANK SHAFT COMPLETE		1		
080	211323-3	BALL BEARING 6904LLU		1		
081	961060-6	RETAINING RING S-20		1		
082	232498-5	CONICAL COMP. SPRING 21-26		1		
083	327273-3	CLUTCH		1		
084	226869-6	HELICAL GEAR 31		1		
085	267353-2	FLAT WASHER 8		1		
086	961034-7	RETAINING RING		1		
087	345818-5	CUP WASHER 16		1		
088	253749-3	FLAT WASHER 16		1		
089	226867-0	SPIRAL BEVEL GEAR 8		1		
090	254239-9	KEY 4		1		
091	211131-2	BALL BEARING 6001DDW		1		
092	125386-2	TORQUE LIMITER ASS'Y		1		
093	961006-2	RETAINING RING S-10		1		
094	210005-4	BALL BEARING 608DDW		1		
095	459181-1	SEAL RING A		1		

096	136330-4	GEAR HOUSING ASS'Y		1		
D10		INC. 88,97,98				
097	213445-5	O-RING 26		1		
098	459183-7	SPONGE SHEET		1		
099	140J32-6	AIR DUCT COMPLETE		1		
100	515448-8	ARMATURE ASS'Y 220-240V		1		
D10		INC. 101-105				
101	331775-3	SLEEVE 10		1		
102	211097-6	BALL BEARING 600LLB		1		
103	253171-4	FLAT WASHER 10		1		
104	681644-1	INSULATION WASHER		1		
105	210005-4	BALL BEARING 608DDW		1		
106	267804-5	WAVE WASHER 15		1		
107	266329-6	TAPPING SCREW 5X60		2		
108	459172-2	BAFFLE PLATE		1		
109	621899-6	FIELD		1		
110	459158-6	MOTOR HOUSING		1		
111	620C43-0	LED CIRCUIT		1		
112	632N59-9	BRUSH HOLDER UNIT		1		
113	197245-0	CARBON BRUSH CB-351		1	*	
113-1	197244-2	CARBON BRUSH CB-351	O	1		
114	652044-2	+BIND SCREW M3.5X5.0		2		
115	266404-8	TAPPING SCREW BIND 3X14		3		
116	459169-1	REAR COVER		1		
117	266326-2	TAPPING SCREW 4X18		4		
118	632P88-4	LEAD UNIT		1		
119	632P89-2	LEAD UNIT		1		
120	620C41-4	CONTROLLER		1		
121	266404-8	TAPPING SCREW BIND 3X14		2		
122	266326-2	TAPPING SCREW 4X18		2		
123	140M21-9	HANDLE STOPPER COMPLETE		1		
C10	263005-3	RUBBER PIN 6		2		
124	459161-7	HANDLE BASE		1		
125	232500-4	COMPRESSION SPRING 10		1		
126	459174-8	CHANGE LEVER		1		
127	266326-2	TAPPING SCREW 4X18		1		
128	459184-5	CUSHION RING 12		2		
129	459176-4	SHOULDER SLEEVE 5		2		
130	266459-3	TAPPING SCREW 5X25		2	*	
130-1	266041-8	TAPPING SCREW 5X25	<	2		
131	266326-2	TAPPING SCREW 4X18		4		
132	856V90-1	HR3012FC NAME PLATE		1		
133	818U61-0	CLEAR LABEL		1	*	
134	266326-2	TAPPING SCREW 4X18		1		
135	347502-8	LOCK PLATE		1		
136	459164-1	HANDLE		1		
137	459177-2	SWITCH LEVER		1		
138	459178-0	SWITCH HOLDER		1		
139	646755-9	RESISTOR		1	*	
139-1	646755-9	RESISTOR	O	1		
140	645190-8	NOISE SUPPRESSOR		1		

141	654531-7	TERMINAL BLOCK 2P		1	*		
141-1	654741-6	TERMINAL BLOCK	O	1			
142	424031-9	SPONGE SHEET		1			
143	651385-3	SWITCH C3JW-A1B-PA7		1			
144	459166-7	HANDLE COVER		1			
145	266326-2	TAPPING SCREW 4X18		1			
146	687169-3	STRAIN RELIEF		1			
147	266326-2	TAPPING SCREW 4X18		1			
148	682573-1	CORD GUARD 10		1			
149	665890-4	POWER SUPPLY CORD 1.0-2-4.0		1			
150	126882-3	GRIP ASSEMBLY		1			
D10		INC. 151-159					
151	144959-2	LOCK BUTTON COMPLETE		1			
152	233360-7	COMPRESSION SPRING 4		1			
153	265625-9	THUMB SCREW M6X50		1			
154	422258-5	SPONGE SHEET		1			
155	458355-1	SIDE HANDLE BASE		1			
156	931302-2	HEX. NUT M6		1			
157	458357-7	GRIP 36		1			
158	422255-1	CAP		1			
159	161838-9	FIX PIN		1			
160	136305-3	TOOL HOLDER ASS'Y		1			
D10		INC. 30-32,37-44					
A01	191F46-4	DRILL CHUCK SET		1			
A02	331886-4	DEPTH GAUGE		1			
A03	8012G9-4	HR3012FCJ INDICATION LABEL		1			
A04	8012H0-9	HR3012FCJ PLASTIC CASE LABEL		2			
A05	821552-6	CONNECTOR PLASTIC CASE (TYP E4)		1			
C10	453974-8	LATCH		4			
A06	835B25-5	INNER TRAY		1			
F05	191F45-6	TOOL HANGER SET		1			
F06	191F47-2	TOOL HOLDER SET		1			
F07	191F49-8	DUST CASE SET		1			
F10	191G00-4	DX11DUST COLLECTION SYSTEM SET		1			
F31	199557-7	FILTER SET		1			
G12	1914X3-8	DUST EXTRACTION PAD SET		1			

Please state Parts No. when your order.

Print Date 09/10/2024