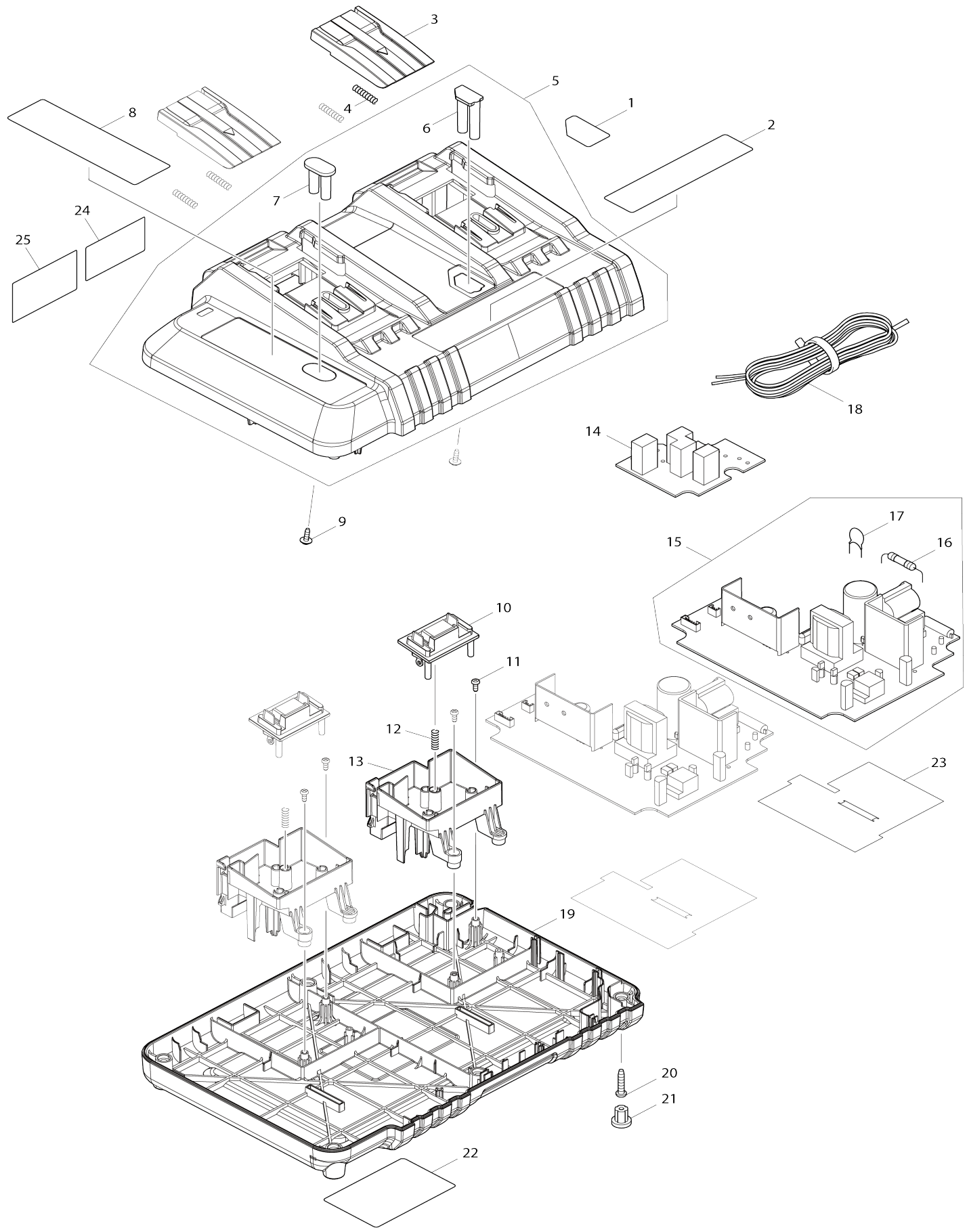


Model No.DC18SH TWO PORT MULTI CHARGER



Model No.DC18SH TWO PORT MULTI CHARGER

Item No.	Parts No.	Description	Interchangability	Q'ty	New/Old	Note1	Note2
001	818Y86-8	INDICATION LABEL		1			
002	818R90-5	MAKITA LOGO LABEL		1			
003	455546-5	TERMINAL COVER		2			
004	231474-6	COMPRESSION SPRING 4		4			
005	140H47-1	CHARGER CASE COMPLETE		1			
D10		INC. 6,7					
006	459067-9	LENS B		1			
007	459066-1	LENS A		1			
008	818Y88-4	CHARGING CONDITION LABEL		1			
009	266278-7	TAPPING SCREW FLANGE BT3X10		2			
010	632G53-9	TERMINAL UNIT		2			
011	266764-8	TAPPING SCREW 3X8		4			
012	233194-8	COMPRESSION SPRING 4		2			
013	459069-5	TERMINAL BASE		2			
014	620A20-0	FILTER CIRCUIT		1			
015	620B08-6	CHARGING CIRCUIT		2	*		
D10		INC. 16,17					
015-1	620H37-5	CHARGING CIRCUIT	O	2			
D10		INC. 16,17					
016	652067-0	FUSE		2			
017	647070-4	VARISTOR		2			
018	667746-7	POWER SUPPLY CORD		1			
019	459068-7	CHARGER CASE COVER		1			
020	266346-6	TAPPING SCREW BT 4X20		6			
021	286255-3	CAP 13		4			
022	855K61-9	DC18SH NAME PLATE		1			
F04	199687-4	DC18SH TWO PORT MULTI CHARGER		1			

Please state Parts No. when your order.

Print Date 05/24/2024