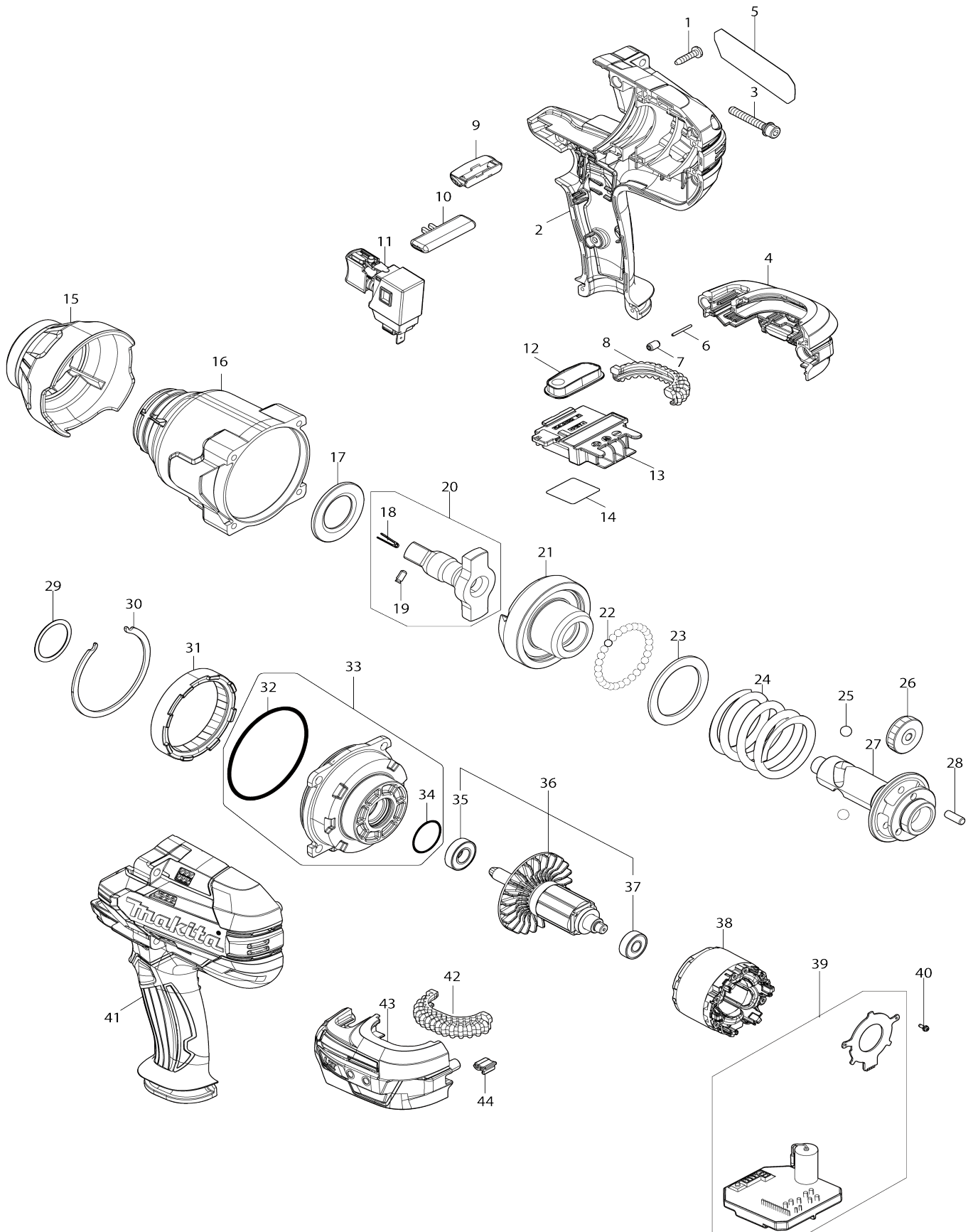


# Model No.DTW1004 CORDLESS IMPACT WRENCH



Model No.DTW1004 CORDLESS IMPACT WRENCH

Item No.	Parts No.	Description	Interchangability	Q'ty	New/Old	Note1	Note2
001	266326-2	TAPPING SCREW 4X18		9	*		
001-1	265995-6	TAPPING SCREW 4X18	O	9	*		
001-2	265E16-4	TAPPING SCREW 4X18	O	9			
002	1830A6-1	HOUSING SET		1			
002		INC. 41					
003	265D13-4	H.S.H.BOLT M5X35 WITH WRM		4			
004	183C12-7	BATTERY HOUSING SET		1			
C10	263005-3	RUBBER PIN 6		2			
C20	252126-6	HEX. LOCK NUT M4-7		4			
004		INC. 43					
005	8142F9-8	DTW1004 NAME PLATE		1			
006	268284-8	PIN 1.5		1			
007	263036-2	RUBBER PIN 5		1			
008	422A56-3	CUSHION RUBBER		1			
009	620351-1	LED CIRCUIT		1			
010	456268-0	F/R CHANGE LEVER		1			
011	143416-7	SWITCH COMPLETE		1			
012	143417-5	SWITCH PLATE COMPLETE		1			
013	643899-6	TERMINAL		1			
014	8142G3-7	DTW1004 SERIAL NO.LABEL		1			
015	424978-7	BUMPER		1			
016	141T82-4	HAMMER CASE COMPLETE		1			
017	346948-5	WASHER 25		1			
018	322045-1	CLIP		1			
019	268098-5	PIN 4		1			
020	137036-7	ANVIL A ASS'Y		1			
020		INC. 18,19					
021	327C92-5	HAMMER		1			
022	216002-8	STEEL BALL 4.8		29			
023	267493-6	FLAT WASHER 38		1			
024	232829-8	COMPRESSION SPRING 38		1			
025	216009-4	STEEL BALL 7.1		2			
026	226880-8	SPUR GEAR 24		3			
027	326611-6	SPINDLE		1			
028	268079-9	PIN 5		3			
029	267127-1	FLAT WASHER 26		1			
030	346947-7	RETAINER		1			
031	227392-4	INTERNAL SPUR GEAR 54		1			
032	213720-9	O RING 67		1			
033	135718-5	INTERNAL GEAR CASE ASS'Y		1			
033		INC. 32,34					
034	213961-7	O RING 22		1			
035	210069-8	BALL BEARING 6900DDW		1			
036	519592-3	ROTOR ASSY		1			
036		INC. 35,37					
037	211022-7	BALL BEARING 607ZZ		1			
038	629C44-5	STATOR		1			

039	620N12-7	CONTROLLER		1		
040	652119-7	PAN HEAD SCREW M2X6		6		
041	1830A6-1	HOUSING SET		1		
041		INC. 2				
042	422A56-3	CUSHION RUBBER		1		
043	183C12-7	BATTERY HOUSING SET		1		
C10	263005-3	RUBBER PIN 6		2		
C20	252126-6	HEX. LOCK NUT M4-7		4		
043		INC. 4				
044	424517-3	CUSHION		1		
A01	251314-2	+ SCREW M4X12		2		
A02	346949-3	HOOK		1		
F01	191G67-2	EXTENSION HANDLE SET		1		
F25	1913P0-2	RING SET		1		
C10	162341-3	BRACKET		1		
C20	282022-4	RING 40		1		

Please state Parts No. when your order.

Print Date 10/10/2024