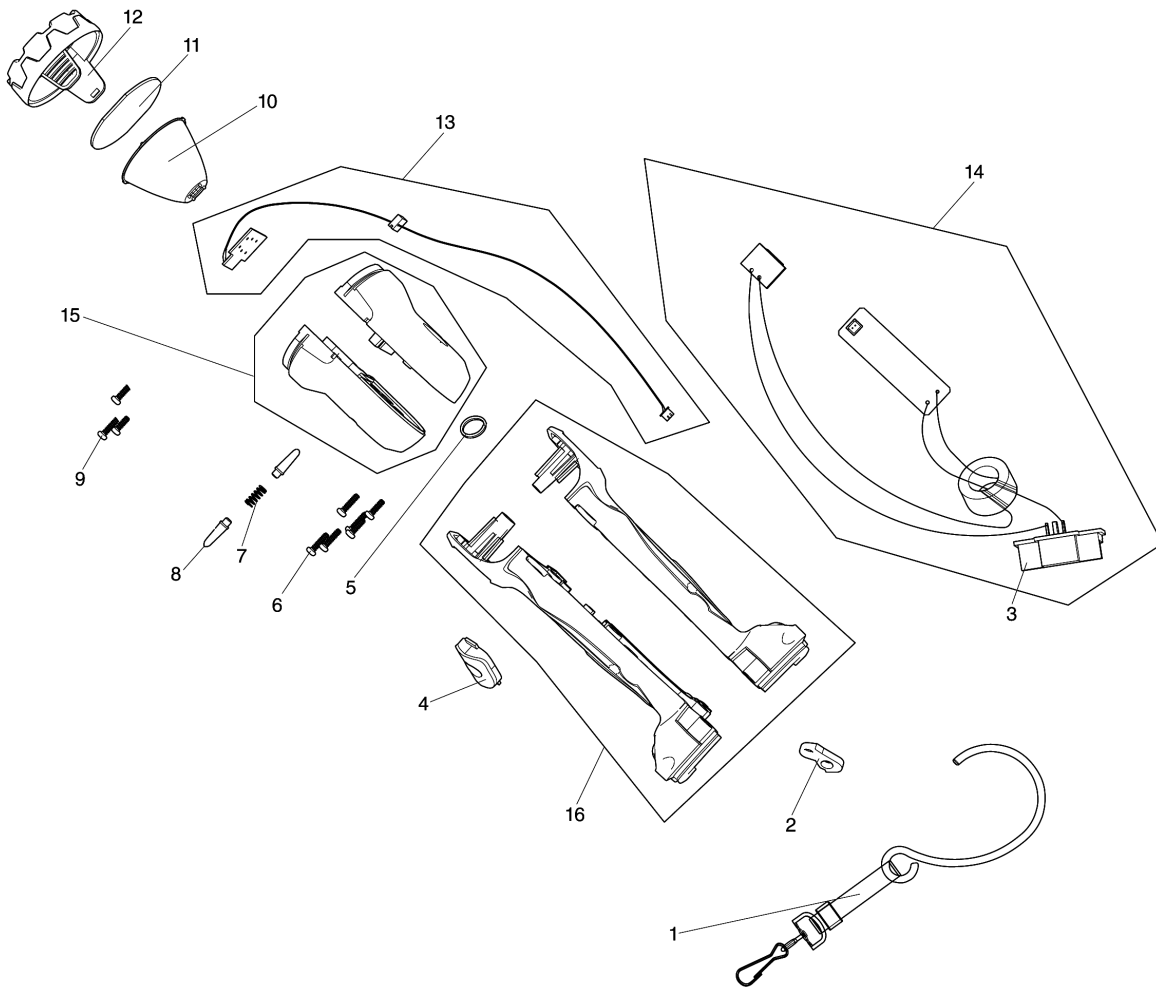


Model No.DML802 LED FLASHLIGHT



Model No.DML802 LED FLASHLIGHT

Item	Parts No.	Description	I/C	Qty	New/Old	Opt. 1	Opt. 2	Note
001	GM00001289	HOOK BAND SET(G0180200100)		1				
002	GM00001290	HOOK PLATE(B2804802921)		1				
003	GM00001117	BATTERY HOLDER C2010239007		1				
004	GM00001291	SWITCH COVER(G0180200200)		1				
005	GM00001292	RING (B3103184009)		1				
006	GM00001293	SCREW 3X12 PB(B0130120202)		6				
007A	GM00001294	COMPRESSION SPRING B1303802922		1	*			
007-1A	GM00001703	KNOCK SHAFT SPRING B1312105022	S	1				
007-1B	GM00001703	KNOCK SHAFT SPRING B1312105022		1				
008A	GM00001295	LOCKING SHAFT(C4120802001)		2	*			
008-1A	GM00001704	KNOCK SHAFT C4120105001	S	2				
008-1B	GM00001704	KNOCK SHAFT C4120105001		2				
009A	GM00001296	SCREW M3X8(B0120308099)		3	*			
010	GM00001297	REFLECTOR(C1720802003)		1				
011	GM00001298	LENS(C1720802001)		1				
012	GM00001299	BEZEL(C1720802002)		1				
013A	GM00001300	LED CIRCUIT ASS'Y(G0380220100)		1	*			
013-1A	GM00001213	LED CIRCUIT ASS'Y(G0380220100)	O	1	*			
013-2A	GM00001951	LED CIRCUIT ASS'Y(R0S88020300)	S	1				
013-2B	GM00001951	LED CIRCUIT ASS'Y(R0S88020300)		1				
014	GM00001301	MAIN CIRCUIT ASS'Y(G0380220200)		1				
015A	GM00001302	ALUMINUM HEAD L/R(G0180200300)		1	*			
015-1A	GM00001702	AL HEAD ROS81050304	S	1				
015-1B	GM00001702	AL HEAD ROS81050304		1				
016	GM00001303	HOUSING L/R(G0180200400)		1				
017A	GM00001296	SCREW M3X8(B0120308099)	S	2				
017B	GM00001296	SCREW M3X8(B0120308099)		2				
018A	GM00001701	WIRE HOLDER C4120105002	S	2				
018B	GM00001701	WIRE HOLDER C4120105002		2				

Please order the parts with part number.

Print Date 24/10/2023