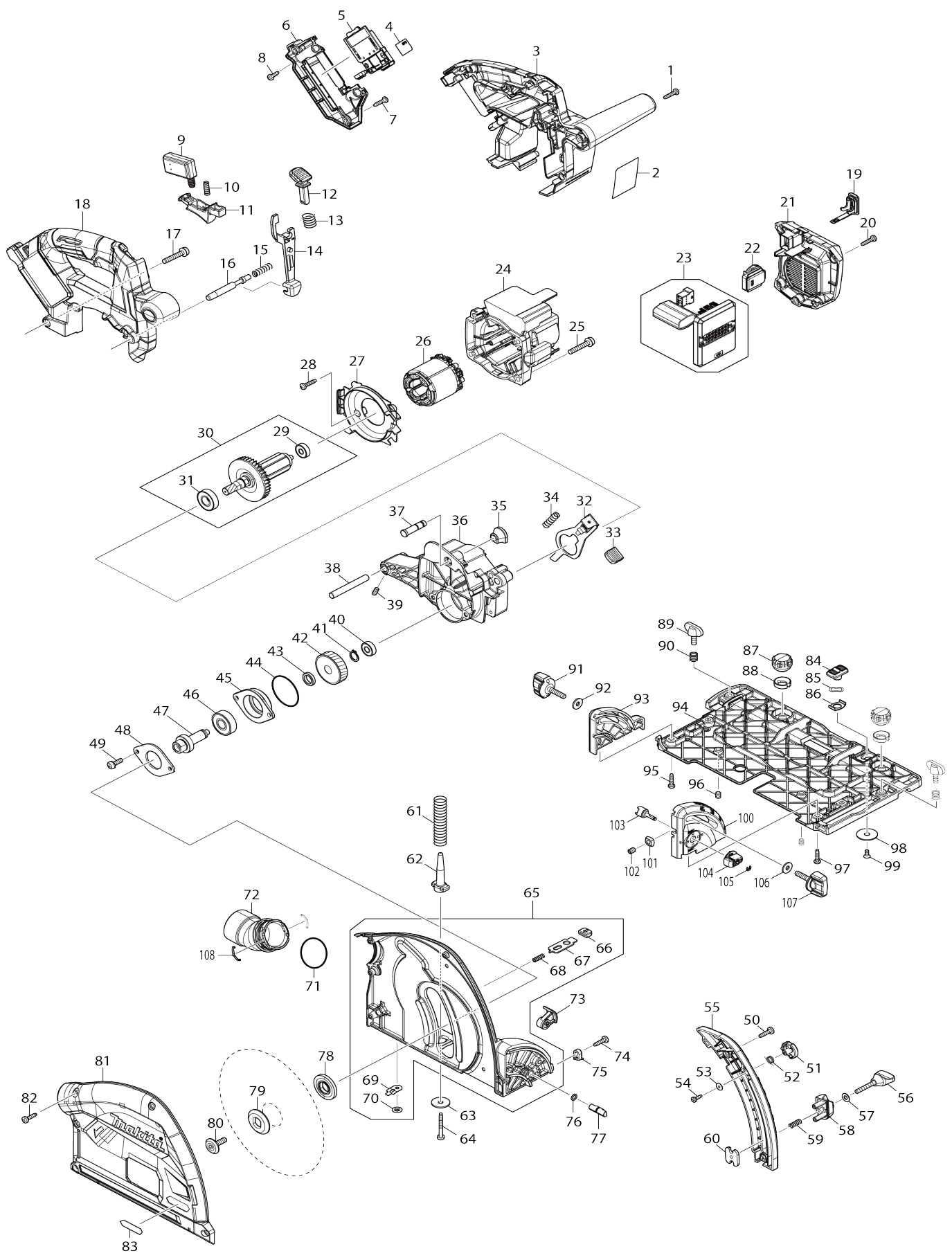


Model No.SP001G 165MM CORDLESS PLUNGE CUT SAW



Model No.SP001G 165MM CORDLESS PLUNGE CUT SAW

Item No.	Parts No.	Description	Interchangability	Q'ty	New/Old	Note1	Note2
001	266326-2	TAPPING SCREW 4X18		6	*		
001-1	265995-6	TAPPING SCREW 4X18	O	6			
002	811W45-9	SP001G NAME PLATE		1			
003	183T62-4	HANDLE SET		1			
C10	263005-3	RUBBER PIN 6		1			
003		INC. 18					
004	811W53-0	SP001G SERIAL NO. LABEL		1			
005	632P65-6	TERMINAL UNIT		1			
006	141D05-6	TERMINAL HOUSING COMPLETE		1	*		
C10	263005-3	RUBBER PIN 6		1	*		
006-1	136699-6	TERMINAL HOUSING ASSEMBLY	O	1			
C10	263005-3	RUBBER PIN 6		1			
007	266326-2	TAPPING SCREW 4X18		2	*		
007-1	265995-6	TAPPING SCREW 4X18	O	2			
008	266326-2	TAPPING SCREW 4X18		2	*		
008-1	265995-6	TAPPING SCREW 4X18	O	2			
009	651083-9	SWITCH C3XA-1PSPM		1			
010	234078-3	COMPRESSION SPRING 4		1			
011	457748-9	SWITCH LEVER		1			
012	419629-5	LOCK OFF BUTTON		1			
013	233089-5	COMPRESSION SPRING 12		1			
014	457749-7	LOCK PLATE		1			
015	233267-7	COMPRESSION SPRING 7		1			
016	324709-3	LOCK PIN 8		1			
017	911253-5	PAN HEAD SCREW M5X30		2			
018	183T62-4	HANDLE SET		1			
C10	263005-3	RUBBER PIN 6		1			
018		INC. 3					
019	140F99-0	CAP COMPLETE		1			
C10	213A05-9	O-RING16		1			
C20	818H07-8	CAP LABEL		1			
020	266326-2	TAPPING SCREW 4X18		5	*		
020-1	265995-6	TAPPING SCREW 4X18	O	5			
021	413844-3	REAR COVER		1			
022	620F56-9	DIAL CIRCUIT		1			
023	620F55-1	CONTROLLER		1			
024	413840-1	MOTOR HOUSING		1			
025	911253-5	PAN HEAD SCREW M5X30		4			
026	629A81-7	STATOR		1			
027	413845-1	BAFFLE PLATE		1			
028	266326-2	TAPPING SCREW 4X18		2	*		
028-1	265995-6	TAPPING SCREW 4X18	O	2			
029	210022-4	BALL BEARING 626DDW		1			
030	519698-7	ROTOR ASSY		1			
030		INC. 29,31					
031	211131-2	BALL BEARING 6001DDW		1			
032	345742-2	SHAFT LOCK		1			

033	286039-9	CAP		1		
034	233084-5	COMPRESSION SPRING 6		1		
035	286040-4	CAP		1		
036	141D07-2	GEAR HOUSING COMPLETE		1		
C10	213415-4	O RING 28		1		
037	324708-5	STOPPER PIN 8		1		
038	324716-6	PIN 8		1	*	
038-1	327B66-0	PIN 8	<	1		
039	266213-5	H.S.SET SCREW(FLAT POINT)M5X12		1		
040	211021-9	BALL BEARING 607LLB		1	*	
040-1	210331-1	BALL BEARING 607LLB	O	1		
041	961052-5	RETAINING RING (EXT) S-12		1		
042	221548-1	HELICAL GEAR 41		1		
043	257010-0	RING 12		1		
044	213512-6	O RING 39		1		
045	318088-9	BEARING BOX		1		
046	211129-9	BALL BEARING 6201DDW		1		
047	324707-7	SPINDLE		1		
048	285689-7	BEARING RETAINER 55		1		
049	911221-8	PAN HEAD SCREW M5X16		2		
050	266034-5	TAPPING SCREW CT 4X16		2		
051	419630-0	LOCK LEVER		1		
052	231665-9	TORSION SPRING 7		1		
053	253821-1	FLAT WASHER 3		1		
054	266007-8	TAPPING SCREW BIND PT 3X10		1		
055	413847-7	DEPTH GUIDE		1		
056	265762-9	THUMB SCREW M5X30		1		
057	941101-4	FLAT WASHER 5		1	*	
057-1	253414-4	FLAT WASHER 5	O	1		
058	419623-7	STOPPER BLOCK		1		
059	231372-4	COMPRESSION SPRING 5		1		
060	345744-8	NUT PLATE		1		
061	233479-2	COMPRESSION SPRING 11		1		
062	419624-5	SPRING HOLDER		1		
063	253010-8	FLAT WASHER 6		1		
064	266053-1	TAPPING SCREW 4X35		1		
065	141D06-4	BLADE CASE COMPLETE		1		
065		INC. 66-70				
066	286041-2	CAP 14		2		
067	345747-2	SPACER PLATE		2		
068	233025-1	COMPRESSION SPRING 2		2		
069	347392-9	PLATE		2		
070	259008-3	PUSH NUT 4		2		
071	213460-9	O RING 35		1		
072	413846-9	DUST NOZZLE		1		
073	144867-7	LEVER 20 COMPLETE		1		
C10	263002-9	RUBBER PIN 4		1		
074	266034-5	TAPPING SCREW CT 4X16		1		
075	419632-6	POSITION PLATE		1		
076	213021-5	O RING 5		1		
077	324710-8	PIN 8		1		

078	224593-5	INNER FLANGE 35		1		
079	224409-4	OUTER FLANGE 35		1		
080	266403-0	HEX. SOCKET HEAD BOLT M6		1		
081	312B61-3	BLADE CASE COVER		1		
082	266034-5	TAPPING SCREW CT 4X16		5		
083	8025F3-0	XGT LOGO LABEL		1		
084	458092-7	SLIDE LEVER		1		
085	253932-2	WAVE WASHER 10		1		
086	345977-5	PLATE		1		
087	265775-0	THUMB SCREW M4X3		2	*	
087-1	265775-0	THUMB SCREW M4X3	O	2		
088	419627-9	HOLDER		2		
089	265701-9	THUMB SCREW M6X14		2		
090	231316-4	COMPRESSION SPRING 7		2	*	
090-1	231240-1	COMPRESSION SPRING 7	O	2		
091	265776-8	THUMB SCREW M6X26		1		
092	253111-2	FLAT WASHER 6		1		
093	419596-4	REAR ANGULAR GUIDE		1		
094	312B64-7	BASE		1		
095	266326-2	TAPPING SCREW 4X18		2	*	
095-1	265995-6	TAPPING SCREW 4X18	O	2		
096	266225-8	H.S.SET SCREW(FLAT POINT)M6X 8		2		
097	266326-2	TAPPING SCREW 4X18		2	*	
097-1	265995-6	TAPPING SCREW 4X18	O	2		
098	345748-0	LOCK WASHER		1		
099	912112-6	COUNTERSUNK HEAD SCREW M4 X10		1		
100	413A11-6	FRONT ANGULAR GUIDE		1		
101	252157-5	SQUARE NUT M6		1		
102	266225-8	H.S.SET SCREW(FLAT POINT)M6X 8		1		
103	324731-0	STOPPER PIN		1		
104	457963-5	DIAL 22		1		
105	961017-7	STOP RING E-3		1		
106	253111-2	FLAT WASHER 6		1		
107	265776-8	THUMB SCREW M6X26		1		
108	232674-1	LEAF SPRING		2		
A01	B-57336	TCT BLADE165X20X56TWOOD/M DF DB		1		
A02	783203-8	HEX. WRENCH 5		1		
A03	198900-7	WIRELESS UNIT SET		1	*	
A03-1	198900-7	WIRELESS UNIT SET	<	1	*	
A03-2	198900-7	WIRELESS UNIT SET	O	1	*	
A03-3	198900-7	WIRELESS UNIT SET	<	1		
A04	8040F4-4	SP001GZ03 INDICATION LABEL		1		
A05	8040F5-2	SP001GZ03 PLASTIC CASE LABEL		2	*	
A05-1	8040F6-0	SP001GZ03 PLASTIC CASE LABEL	O	2		
A06	821552-6	CONNECTOR PLASTIC CASE (TYP E4)		1		
C10	453974-8	LATCH		4		
A07	8351E4-2	INNER TRAY		1		
F03	194367-7	GUIDE RAIL 3000 SET		1		

F04	194368-5	GUIDE RAIL 1400 SET		1		
F06	194416-0	SHEET 10000 SET		1		
F07	194417-8	RUBBER SHEET 10000 SET		1		
F08	194418-6	POSITION SHEET 1400 SET		1		
F10	194910-2	POSITION SHEET 1900 SET		1		
F12	194925-9	GUIDE RAIL 1900 SET		1		
F14	195546-0	FRONT CUFF 24 SET		1		
F15	196664-7	BEVEL GUIDE SET		1		
F16	199140-0	GUIDE RAIL 1000 SET		1		
F17	199141-8	GUIDE RAIL 1500 SET		1		
F28	1913K7-3	PARALLEL GUIDE SET(MM)		1		

Please state Parts No. when your order.

Print Date 23/12/2024