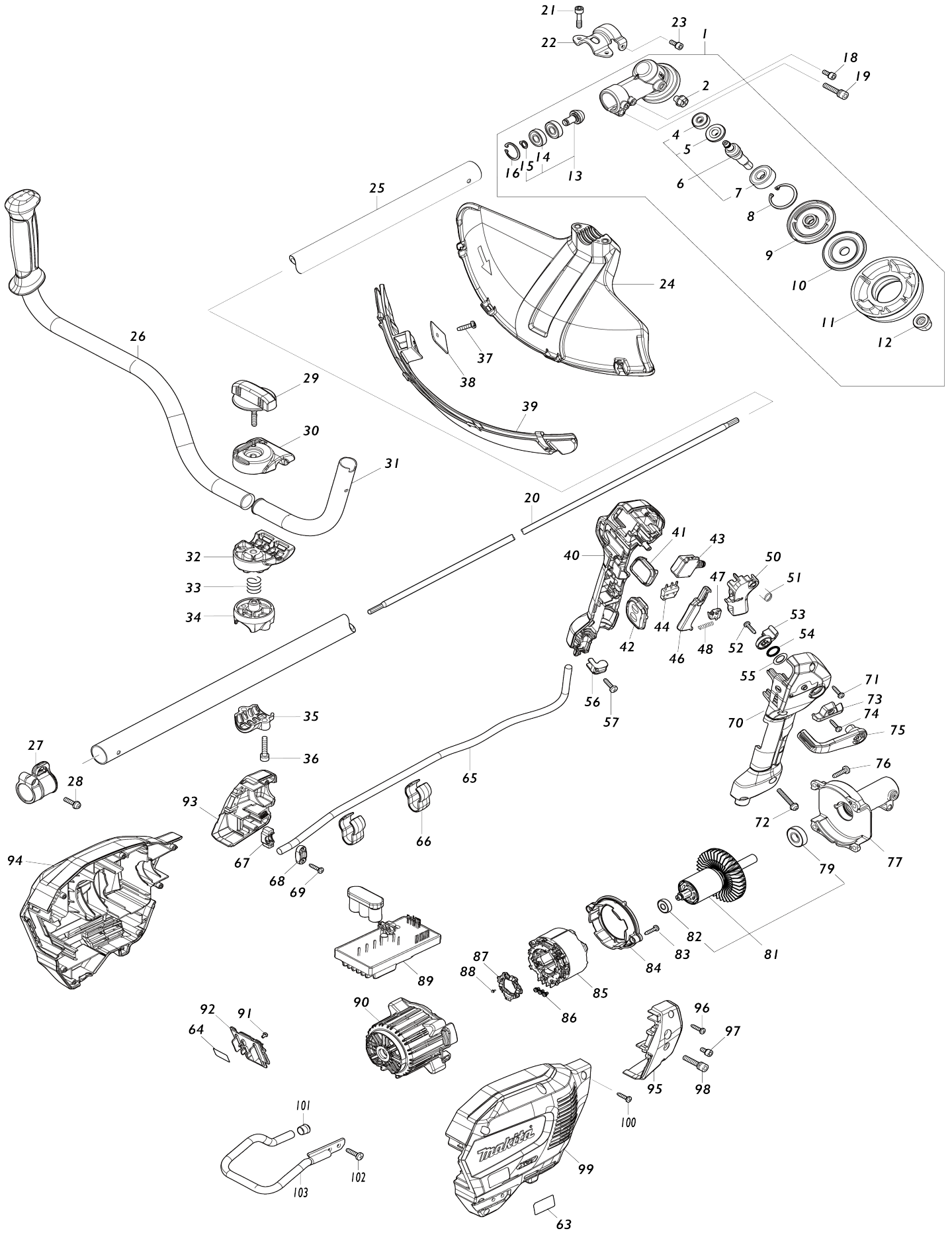


Model No.UR013G CORDLESS GRASS TRIMMER



Model No.UR013G CORDLESS GRASS TRIMMER

Item No.	Parts No.	Description	Interchangability	Q'ty	New/Old	Note1	Note2
001	122D71-2	GEAR CASE ASSEMBLY G		1			
001		INC. 2,6,8-13,16					
002	265590-2	+HEX.BOLT M8X10 WITH R		1			
004	210030-5	BALL BEARING 627ZZ		1			
005	226988-8	SPIRAL BEVEL GEAR 19		1			
006	136923-7	CUTTER SHAFT US ASSEMBLY		1			
006		INC. 4,5,7					
007	211228-7	BALL BEARING 6202DDW		1			
008	259069-3	RETAINING RING (INT) R-35		1			
009	140N88-3	RECEIVE WASHER COMPLETE		1			
010	347766-4	CLAMP WASHER US		1			
011	413201-5	CUP US		1			
012	252236-9	HEX. LOCK NUT M10-17		1			
013	136922-9	SPIRAL BEVEL GEAR ASSEMBLY		1			
013		INC. 14,15					
014	210157-1	BALL BEARING 609ZZ		2			
015	259071-6	RETAINING RING (EXT) S-9		1			
016	259072-4	RETAINING RING (INT)R-24		1			
018	922216-6	H.S.H.BOLT M5X14 WITH W		1			
019	922353-6	HEX.SOCKET HEAD BOLT M6X30		1			
020	326205-7	SHAFT		1			
021	266280-0	HEX. SOCKET HEAD BOLT M6X25		2			
022	347B13-5	PROTECTOR CLAMP 25G		1			
023	922216-6	H.S.H.BOLT M5X14 WITH W		1			
024	413P07-7	PROTECTOR U 450		1			
025	141N28-4	SHAFT PIPE COMPLETE A		1			
C10	819312-8	MAKITA LOGO LABEL		1			
C20	8040V7-0	CAUTION LABEL		1			
026	141D27-6	HANDLE 22L COMPLETE		1			
C10	273014-4	GRIP 36		1			
027	141N34-9	HANGER		1			
C10	931202-6	HEX. NUT M5		1			
028	911233-1	PAN HEAD SCREW M5X20		1			
029	162965-5	KNOB 57		1			
030	144313-0	UPPER HANDLE HOLDER COMPLETE		1			
C10	263005-3	RUBBER PIN 6		1			
031	327837-3	HANDLE 22 R		1			
032	319517-5	LOWER HANDLE HOLDER		1			
033	233309-7	COMPRESSION SPRING 17		1			
034	312D92-4	UPPER PIPE HOLDER 25		1			
035	312D93-2	LOWER PIPE HOLDER 25		1			
036	922351-0	HEX. SOCKET HEAD BOLT M6X30		2			
037	266388-0	TAPPING SCREW 5X16		1			
038	347115-5	CUTTER		1			
039	144316-4	PROTECTOR U EXT. 420-450 COMP		1			
C10	346696-6	HOOK		2			

C20	232284-4	LEAF SPRING		2		
040	183X45-8	GRIP SET		1		
C10	252180-0	HEX. LOCK NUT M5-8		1		
040		INC. 70				
041	141N49-6	INDICATION CIRCUIT COMPLETE E		1		
042	141N45-4	SWITCH CIRCUIT COMPLETE G		1		
C10	8064D7-4	SWITCH LABEL		1		
043	651492-2	SWITCH C3JR-1A-PAXD3		1		
044	632U35-5	SWITCH UNIT		1		
046	459146-3	LOCK OFF LEVER		1		
047	632U36-3	SWITCH UNIT		1		
048	233101-1	COMPRESSION SPRING 4		1		
050	413N90-2	SWITCH LEVER		1		
051	233622-3	TORSION SPRING 12		1		
052	266326-2	TAPPING SCREW 4X18		1		
053	413N92-8	LINK		1		
054	213154-6	O RING 14		1		
055	253798-0	FLAT WASHER 13		1		
056	687260-7	STRAIN RELIEF		1		
057	266326-2	TAPPING SCREW 4X18		1		
063	8585U1-7	UR013G NAME PLATE		1		
064	8585V0-6	UR013G SERIAL NO. LABEL		1		
065	699218-4	POWER SUPPLY CORD UNIT		1		
066	457458-8	CLAMP		2		
067	687051-6	STRAIN RELIEF		1		
068	687124-5	STRAIN RELIEF		1		
069	266326-2	TAPPING SCREW 4X18		2		
070	183X45-8	GRIP SET		1		
C10	252180-0	HEX. LOCK NUT M5-8		1		
070		INC. 40				
071	266326-2	TAPPING SCREW 4X18		5		
072	911258-5	PAN HEAD SCREW M5X35		1		
073	413P02-7	GUARD		1		
074	266326-2	TAPPING SCREW 4X18		1		
075	413N91-0	CONTROL LEVER		1		
076	266420-0	TAPPING SCREW 5X20		4		
077	136862-1	PIPE BRACKET ASS'Y		1		
C10	263002-9	RUBBER PIN 4		1		
079	210244-6	BALL BEARING 6001ZZ		1		
081	519794-1	ROTOR ASS'Y		1		
081		INC. 79,82				
082	210062-2	BALL BEARING 607ZZ		1		
083	266326-2	TAPPING SCREW 4X18		2		
084	413N96-0	BAFFLE PLATE		1		
085	629B96-0	STATOR		1		
086	652069-6	FLAT HEAD SCREW M3X6		3		
087	632R96-7	SENSOR UNIT		1		
088	652093-9	PAN HEAD SCREW M2X5		3	*	
088-1	652119-7	PAN HEAD SCREW M2X6	O	3		
089	620K86-0	CONTROLLER		1		
090	413N73-2	MOTOR HOUSING		1		

091	652031-1	PAN HEAD SCREW M3X6		2		
092	632T07-4	TERMINAL UNIT		1		
093	183X42-4	HOUSING COVER SET		1		
093		INC. 95				
094	183X39-3	HOUSING SET		1		
C10	263005-3	RUBBER PIN 6		2		
C20	8025F3-0	XGT LOGO LABEL		1		
094		INC. 99				
095	183X42-4	HOUSING COVER SET		1		
095		INC. 93				
096	266326-2	TAPPING SCREW 4X18		2		
097	922211-6	H.S.H.BOLT M5X12 WITH W		1		
098	922353-6	HEX.SOCKET HEAD BOLT M6X30		1		
099	183X39-3	HOUSING SET		1		
C10	263005-3	RUBBER PIN 6		2		
C20	8025F3-0	XGT LOGO LABEL		1		
099		INC. 94				
100	266326-2	TAPPING SCREW 4X18		7		
101	422230-7	CAP		1		
102	266420-0	TAPPING SCREW 5X20		2		
103	327B36-9	BATTERY GUARD		1		
A01	199378-7	BAND ASSEMBLY SET		1		
A04	456924-2	TOOL COVER		1		
A06	782238-6	BOX WRENCH 17		1		
A07	783202-0	HEX. WRENCH 4		1		
A08	783217-7	HEX. WRENCH 5		1		
A09	199884-2	TRIMMER HEAD 105-M10L SET M G		1		
A13	195299-1	CUTTER BLADE SET		1	*	
A13-1	198345-9	CUTTER BLADE 255-2 SET ME	X	1		
A14	1911Y0-3	PROTECTOR 225 SET MG		1		
A15	451252-0	TOOL COVER		1	*	
A15-1	144392-8	TOOL COVER 2T	X	1		
A16	199872-9	CUTTER 225 SET MG		1		
A17	831304-7	ACCESSORY BAG		1		
E01	807950-8	SOUND 95DB LABEL		1		
F05	199378-7	BAND ASSEMBLY SET		1		

Please state Parts No. when your order.

Print Date 12/18/2024