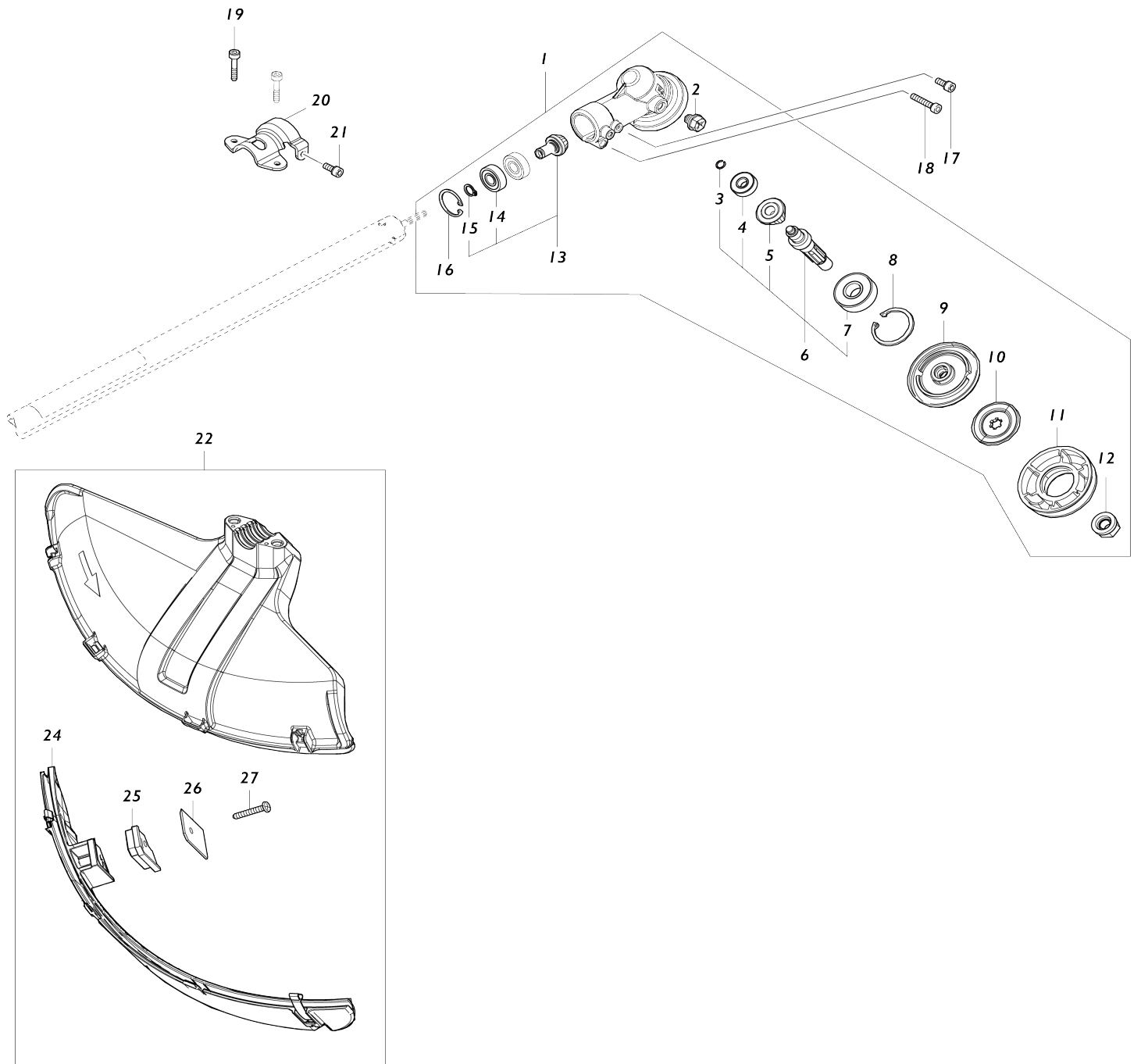
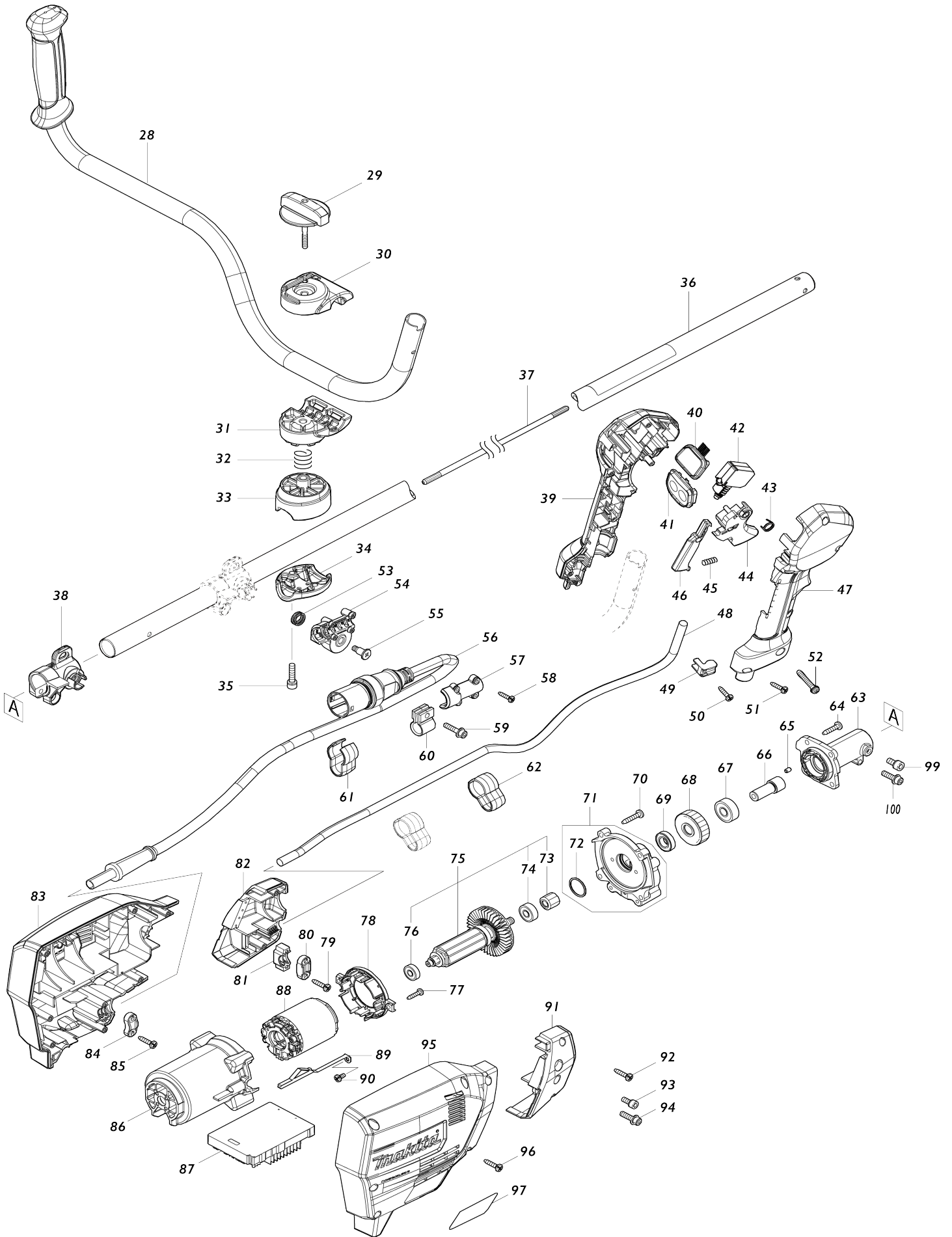


# Model No.UR101C BATTERY POWERED GRASS TRIMMER



# Model No.UR101C BATTERY POWERED GRASS TRIMMER



**Model No.UR101C BATTERY POWERED GRASS TRIMMER**

Item No.	Parts No.	Description	Interchangability	Q'ty	New/Old	Note1	Note2
001	123853-1	GEAR CASE ASSEMBLY		1			
001		INC. 2,6,8-13,16					
002	265590-2	+HEX.BOLT M8X10 WITH R		1			
003	232350-7	RING SPRING 6		1			
004	210030-5	BALL BEARING 627ZZ		1			
005	221484-1	SPIRAL BEVEL GEAR 19		1			
006	136233-2	CUTTER SHAFT ASS'Y		1			
006		INC. 3-5,7					
007	211228-7	BALL BEARING 6202DDW		1			
008	257432-4	RETAINING RING R-35		1			
009	144312-2	RECEIVE WASHER COMPLETE		1			
010	347104-0	CLAMP WASHER		1			
011	457274-8	CUP US		1			
012	252236-9	HEX. LOCK NUT M10-17		1			
013	136235-8	SPIRAL BEVEL GEAR ASS'Y		1			
013		INC. 14,15					
014	210049-4	BALL BEARING 609ZZ		2			
015	257986-1	RETAINING RING (EXT) S-9		1			
016	257987-9	RETAINING RING (INT)R-24		1			
017	922216-6	H.S.H.BOLT M5X14 WITH W		1			
018	922242-5	HEX. SOCKET HEAD BOLT M5X25		1	*		
018-1	922241-7	HEX. SOCKET HEAD BOLT M5X25	O	1			
019	251513-6	H.S.H.BOLT M5X25		2			
020	347107-4	PROTECTOR CLAMP 24		1			
021	922216-6	H.S.H.BOLT M5X14 WITH W		1			
022	191B54-1	PROTECTOR U 430 SET MG		1			
022		INC. 24-27					
024	144316-4	PROTECTOR U EXT. 420-450 COMP		1			
C10	346696-6	HOOK		2			
C20	232284-4	LEAF SPRING		2			
025	459765-5	CUTTER EXTENSION		1			
026	347115-5	CUTTER		1			
027	266459-3	TAPPING SCREW 5X25		1			
028	140J61-9	HANDLE 22 COMPLETE		1			
029	168796-0	KNOB 57		1			
030	144313-0	UPPER HANDLE HOLDER COMPLETE		1			
C10	263005-3	RUBBER PIN 6		1			
031	319517-5	LOWER HANDLE HOLDER		1			
032	233309-7	COMPRESSION SPRING 17		1			
033	319959-3	PIPE HOLDER		1			
034	318426-5	PIPE CLAMP		1			
035	922241-7	HEX. SOCKET HEAD BOLT M5X25		2			
036	140S82-5	SHAFT PIPE COMPLETE I		1			
C10	819312-8	MAKITA LOGO LABEL		1			
C20	819J22-7	CAUTION LABEL		1			
037	327056-1	SHAFT		1			

038	412305-0	PIPE HOLDER 24		1		
039	183L60-0	GRIP SET		1		
C10	252180-0	HEX. LOCK NUT M5-8		1		
039		INC. 47				
040	140K37-2	INDICATION CIRCUIT COMPLETE E		1		
041	140W06-5	SWITCH CIRCUIT COMPLETE G		1		
C10	819J26-9	SWITCH LABEL		1		
042	651436-2	SWITCH C3JW-1A-P-2		1		
043	233540-5	TORSION SPRING 11		1		
044	459145-5	SWITCH LEVER		1		
045	233101-1	COMPRESSION SPRING 4		1		
046	459146-3	LOCK OFF LEVER		1		
047	183L60-0	GRIP SET		1		
C10	252180-0	HEX. LOCK NUT M5-8		1		
047		INC. 39				
048	699132-4	POWER SUPPLY CORD UNIT		1		
049	687260-7	STRAIN RELIEF		1		
050	266326-2	TAPPING SCREW 4X18		1		
051	266326-2	TAPPING SCREW 4X18		5		
052	911258-5	PAN HEAD SCREW M5X35		1		
053	232589-2	TORSION SPRING 12		1		
054	183N86-4	CONNECTOR HOLDER SET		1		
054		INC. 57				
055	266511-7	+ FLAT FILLISTER HEAD SCREW M 5		1		
056	699146-3	POWER SUPPLY CORD UNIT		1	*	
056-1	699161-7	POWER SUPPLY CORD UNIT	<	1		
057	183N86-4	CONNECTOR HOLDER SET		1		
057		INC. 54				
058	266429-2	TAPPING SCREW 3X16		4		
059	922244-1	H.S.H.BOLT M5X25 WITH WG		1		
060	412302-6	CORD HOLDER		1		
061	457458-8	CLAMP		1		
062	457458-8	CLAMP		2		
063	319919-5	PIPE BRACKET		1		
064	911233-1	PAN HEAD SCREW M5X20		4		
065	263002-9	RUBBER PIN 4		1		
066	325811-5	SPINDLE HUB		1		
067	211131-2	BALL BEARING 6001DDW		1		
068	226931-7	HELICAL GEAR 29		1		
069	211150-8	BALL BEARING 6901ZZ		1		
070	266459-3	TAPPING SCREW 5X25		4		
071	136230-8	GEAR BOX ASS'Y		1		
071		INC. 72				
072	213961-7	O RING 22		1		
073	226932-5	HELICAL GEAR 10		1		
074	210005-4	BALL BEARING 608DDW		1		
075	519587-6	ROTOR ASS'Y		1		
075		INC. 73,74,76				
076	210062-2	BALL BEARING 607ZZ		1		
077	266326-2	TAPPING SCREW 4X18		2		

078	459764-7	BAFFLE PLATE		1		
079	266326-2	TAPPING SCREW 4X18		2		
080A	687124-5	STRAIN RELIEF		1	*	
080-1 A	687052-4	STRAIN RELIEF	O	1		
080-1 B	687052-4	STRAIN RELIEF		1		
081	687051-6	STRAIN RELIEF		1		
082	183N25-4	HOUSING COVER SET		1		
082		INC. 91				
083	183N71-7	HOUSING SET		1		
083		INC. 95				
084	687149-9	STRAIN RELIEF		1		
085	266326-2	TAPPING SCREW 4X18		2		
086	459763-9	MOTOR HOUSING		1		
087	620C69-2	CONTROLLER		1		
088	629471-8	STATOR		1	*	
088-1	629C13-6	STATOR	S	1		
089	347620-2	PLATE		1	*	
089-1	654887-8	EARTH PLATE	O	1		
090	911102-6	PAN HEAD SCREW M4X6		1		
091	183N25-4	HOUSING COVER SET		1		
091		INC. 82				
092	266326-2	TAPPING SCREW 4X18		2		
093A	922211-6	H.S.H.BOLT M5X12 WITH W		1	*	
093-1 A	922216-6	H.S.H.BOLT M5X14 WITH W	O	1		
093-1 B	922216-6	H.S.H.BOLT M5X14 WITH W		1		
094	922233-6	H.S.H.BOLT M5X20 WITH WR		1		
095	183N71-7	HOUSING SET		1		
095		INC. 83				
096	266326-2	TAPPING SCREW 4X18		7		
097	856S03-4	UR101C NAME PLATE		1		
099A	922211-6	H.S.H.BOLT M5X12 WITH W		1	*	
100A	922233-6	H.S.H.BOLT M5X20 WITH WR		1	*	
101	638A31-1	LEAD UNIT	S	1		
102	620L68-8	CONTROLLER B	S	1		
103	652119-7	PAN HEAD SCREW M2X6	S	6		
A01	782238-6	BOX WRENCH 17		1		
A02	783202-0	HEX. WRENCH 4		1		
A03	197243-4	BAND ASSEMBLY SET		1		
A04	831304-7	ACCESSORY BAG		1		
A05	198345-9	CUTTER BLADE 255-2 SET ME		1		
A06	144392-8	TOOL COVER 2T		1		
A07A	197993-1	TRIMMER HEAD 95-M10L SET ME		1	*	
C10	456640-6	SPOOL HOLDER		1	*	
C20	232289-4	COMPRESSION SPRING 15		1	*	
C30	144259-0	SPOOL COVER COMPLETE		1	*	
C40	456642-2	SPOOL		1	*	
A07B	191D90-9	TRIMMER HEAD 96-M10L SET		1	*	
A07B		COMPO-PARTS			*	
A07-1	1915D7-6	TRIMMER HEAD 96-M10L SET	O	1		

A08	198383-1	PLASTIC BLADE 255 SET ME		1	*		
A08-1	126642-3	PLASTIC BLADE ASSEMBLY255-M 10L	O	1			
E01A	807949-3	SOUND 94DB LABEL		1	*		
E01B	807950-8	SOUND 95DB LABEL		1	*		
E01-1 A	807950-8	SOUND 95DB LABEL	<	1	*		
E01-1 B	807949-3	SOUND 94DB LABEL	<	1			
E01-2 A	807949-3	SOUND 94DB LABEL	<	1			
F09	197472-9	NYLON CORD 2.0-15M SET		1			
F10	197473-7	NYLON CORD 2.0-30M SET		1			
F11	197474-5	NYLON CORD 2.0-160M SET		1			
F12	197475-3	NYLON CORD 2.0-280M SET		1			
F15	198266-5	TRIMMER HEAD 110-M10L SET M E		1			
F20	198502-9	NYLON CORD 2.4-30M SET		1			
F21	198503-7	NYLON CORD 2.4-120M SET		1			
F22	198504-5	NYLON CORD 2.4-180M SET		1			
F24-1	199450-5	GREASE VESSEL SET	O	1			
F26	199868-0	PLASTIC BLADE 305 SET MG		1			
F27	199870-3	PLASTIC BLADE 305 BLADE SET MG		1			
F45	1915D7-6	TRIMMER HEAD 96-M10L SET		1			
F46	1914R6-0	TRIMMER HEAD ASSEMBLY 98-M 10L		1			
F47	1915D8-4	TRIMMER HEAD 96-M10L SET		1			
F48	1914R8-6	TRIMMER HEAD ASSEMBLY 98-M 10L		1			

Please state Parts No. when your order.

Print Date 02/21/2025